

NT-L1T

Gprs/4g/Wi-Fi
Temperature Transmitter

Data Monitoring Online
Data logging
Temperature Alarm & Control

-  TEMPERATURE
HUMIDITY
MONITOR
-  CLOUD
STORE
EXPORT
-  SMS
ALARM
CONTROL
-  POWER
LOST
ALARM





Overview

NT-L1T series temperature transmitter is designed for temperature humidity of logging, monitoring, alert and control. It comes with temperature probe, and transmit data by GPRS/4G or Wi-Fi. NT provide free cloud service, real-time data dashboard, graph, history records can be shown on web and APP. And alert by email or sms. With output, it supports temperature control by remote or local.

Features



Temperature wireless transmission

- Transmission mode: wireless (option: GPRS, 3g/4g, Wi-Fi)
- Settable transmit interval (min 1 minute)
- Support connect up to 4 servers (IP or domain)



Temperature monitoring on Cloud

- Real-time data can be displayed on web and phone APP
- Support dashboard and graph, history record query and export
- Multi-point monitoring
- Device status real-time displays (online, offline, alarm)



Temperature alarm

- Customized low and high level for alarm
- Alert on web by notice and sound
- Sms alert (Wi-Fi version don't support)
- Cloud email alarm
- Device local sound and light alert (connect siren)



Temperature Control

- Low and high point activate output
- Output control by schedule
- Remote control on web or APP



Power lost alarm

- Inside rechargeable battery with 8-20 hours life
- Sms alarm when power lost (Wi-Fi version don't support)

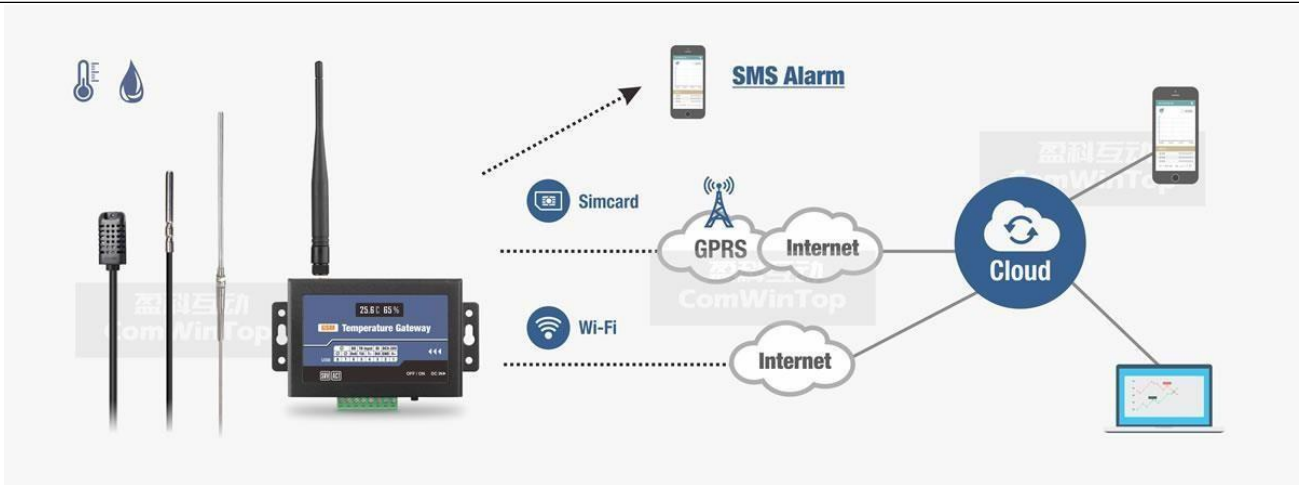
Model List



Model	Probe type	Measuring range	Transmit mode
NT-L1T-DS	DS18B20 (water-proof probe)	T: -40~80°C	Option:
NT-L1TH-AM	AM2301 (not water-proof)	T: -40~80°C H: 0~100%RH	2G
NT-L1T-PT	PT100 (water-proof probe)	T: -200~350°C	3G/4G
NT-L1T-TC	Type-K Thermocouple (water-proof probe)	T: 0~1000°C	Wi-Fi

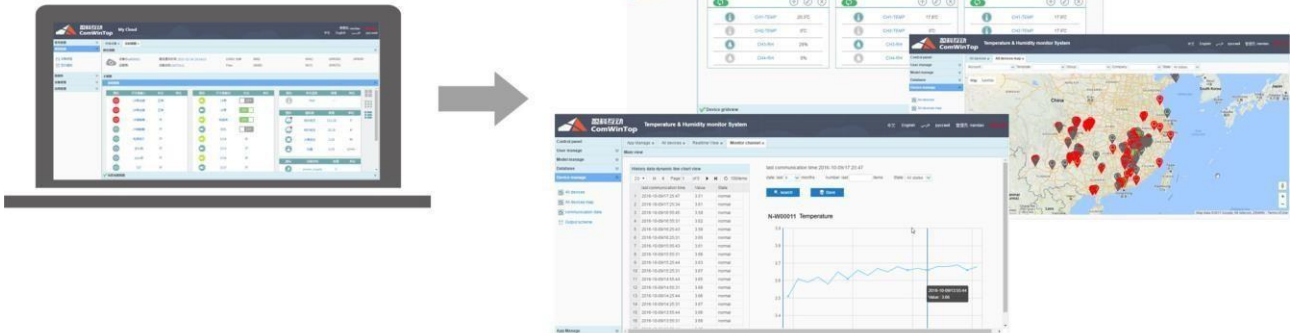
Note:

1. There are 3 versions: 2G, 3G/4G, Wi-Fi can be chosen for each model
2. 4G is compatible with 3G and 2G
3. Sim card is necessary for 2G, 3G/4G version
4. Wi-Fi version don't need sim card, but don't support sms features
5. All of models support NT Cloud service

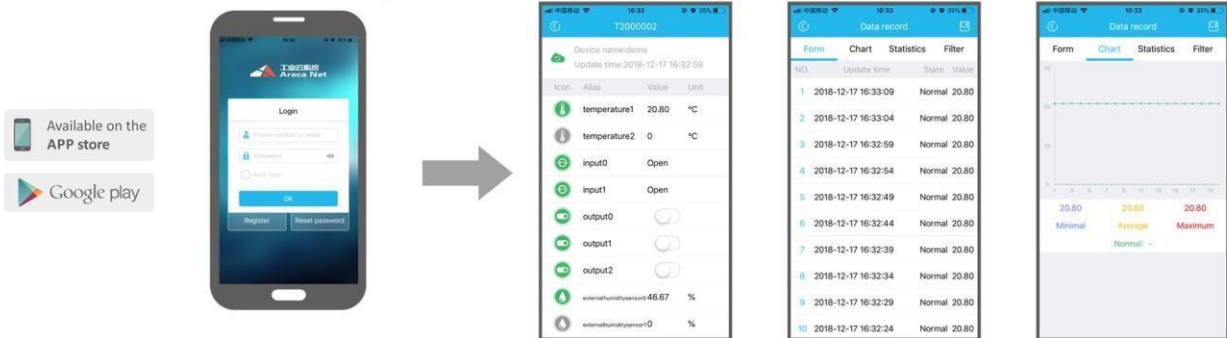


Cloud Service

Observe via Web on PC



Observe via APP on phone



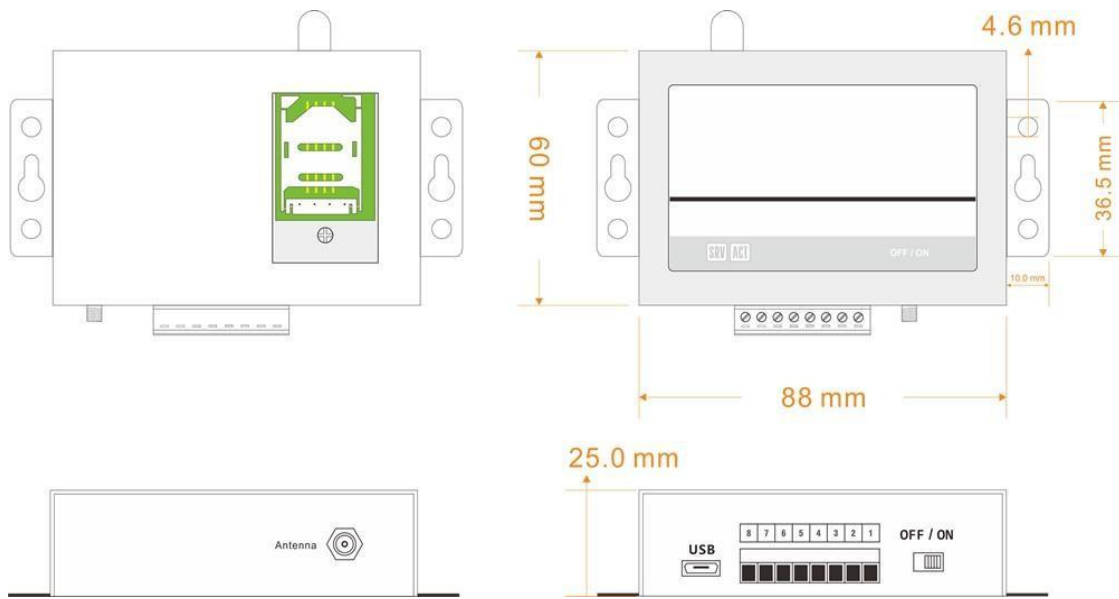
Application



Specification

Core	MCU	Cortex M3 32-bit ARM
Power	Power supply	9-28V DC (Standard adapter: DC 12V/1.5A)
	Consumption	12V input Max. 150mA/Average 50mA
Transmission mode	Wireless	Optional versions: GSM/GPRS (4 band 850/900/1800/1900Mhz) FDD LTE(4G) Wi-Fi, 802.11 b/g security WEP/WPA/WPA2
Temperature Channel	NT-L1T-DS	1 Temperature channel, accept ds18b20 sensor, Measure range: -40~80℃
	NT-L1TH-AM	1 Temperature humidity channel, accept am2301 sensor, Measure range: -40~80℃ / 0~100%RH
	NT-L1T-PT	1 Temperature channel, accept PT100 sensor, Measure range: -200~350℃
	NT-L1T-TC	1 Temperature channel, accept Type-K Thermocouple sensor, Measure range: 0~1000℃
IO channel	Digital input (DI)	1 channel, Dry contact trigger
	Digital output (DO)	NT-L1T-DS: 1 channel transistor output
		NT-L1TH-AM: Output drive voltage=power supply DC voltage Drive current ≤500mA
	NT-L1T-PT: 1 channel relay output (NO, Contact load: 5A / 250VAC, NT-L1T-TC: 30VDC)	
Displayer	OLED screen	128*32, Size: 30*11.5mm
Config port	Mini USB	PL2303 chip
Others interface	SIM/UIM	Standard user card interface
	Antenna	Standard SMA female interface (50Ω)
Others	Battery	lithium-polymer, 500mAh/3.7V, life:8-20 hours
Working Environment	temperature	-30℃ ~ +70℃
	humidity	5 ~ 95%(non-condensing)
Physical	Terminals	1×8pin 3.81mm spacing, pluggable
	Housing	Providing IP30 protection
	Dimension	88×60×25mm
	Weight	150g

Size Diagram



Package list

Transmitter×1, antenna×1, USB cable×1, power adapter×1, prob×1, configure Software